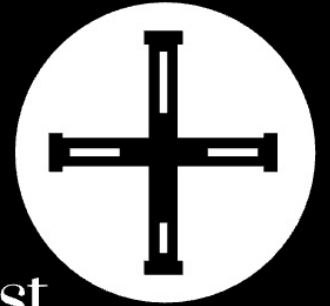
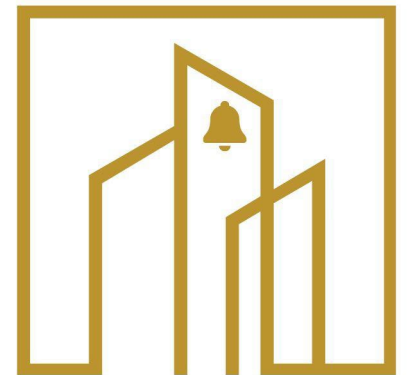


# Grounds Master Plans



First  
Congregational  
UNITED CHURCH OF CHRIST



THE ISAIAH  
PROJECT

# New West Entry



# Grounds Master Planning

- The Isaiah grounds team was established in May of 2024 with the purpose of defining for the congregation a vision for what our outdoor space could become.
- This group development, organized and prioritized a congregational grounds wants and needs list from May to December of 2024 with input from the congregation and many of the committees that serve our church.
- A formal Request for proposals was issued to 5 local Landscape Architects in March of 2024
- After careful review of proposals, many interviews and onsite reviews of our church property selection and procurement of an architect to complete Master Plan occurred in March 2024
- A final plan with revisions and cost estimates was completed in late May 2025. The following slides share more on the process to get to this point as well as the outcome of these efforts.



# Grounds Committee Guiding Principles

- While shaping the vision, formal proposals and final plans the grounds committee was guided by a number key principles including:
- Accessibility for all, ADA as much as possible
- Intentional, better defined outdoor gathering spaces that are multifunctional and flexible while still being connected to natural environment
- Capturing the overall beauty of the site and welcoming people to the property
- Inviting, accessible, safe, usable for both Congregation and the community

# Master Plan Wants and Needs List

- Safe, Level and Accessible surfaces on top level of the Memorial Garden
- Accessible outdoor Gathering Spaces
- Accessible access to the lower level of the memorial garden and ravine
- A Grace Trail – a hub of reflection, healing, learning and connection with nature.
- Outdoor Storage Space
- An Improved Church Sign

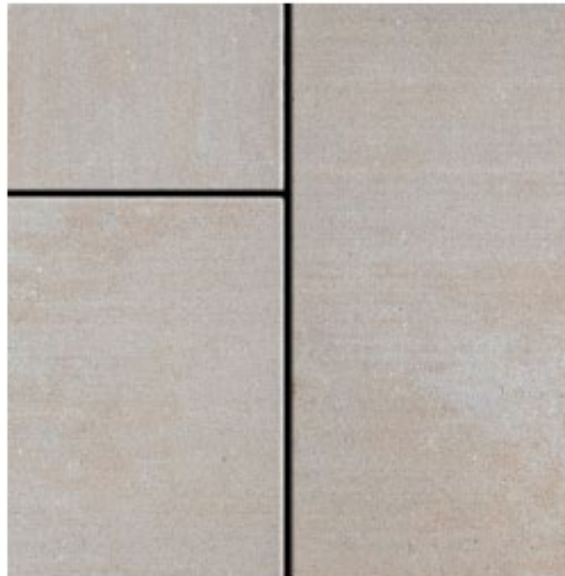




# Memorial Garden



- Replace flagstone with safe surface, flush with door
- Remove existing yews to provide larger space
- Soft color pallet for supplemental plants, deer resistant



# Grounds – Memorial Garden





# Grounds – Memorial Garden



New Memorial Garden Signs



# Grounds – River Room Fellowship Hall Gathering



6/8/25

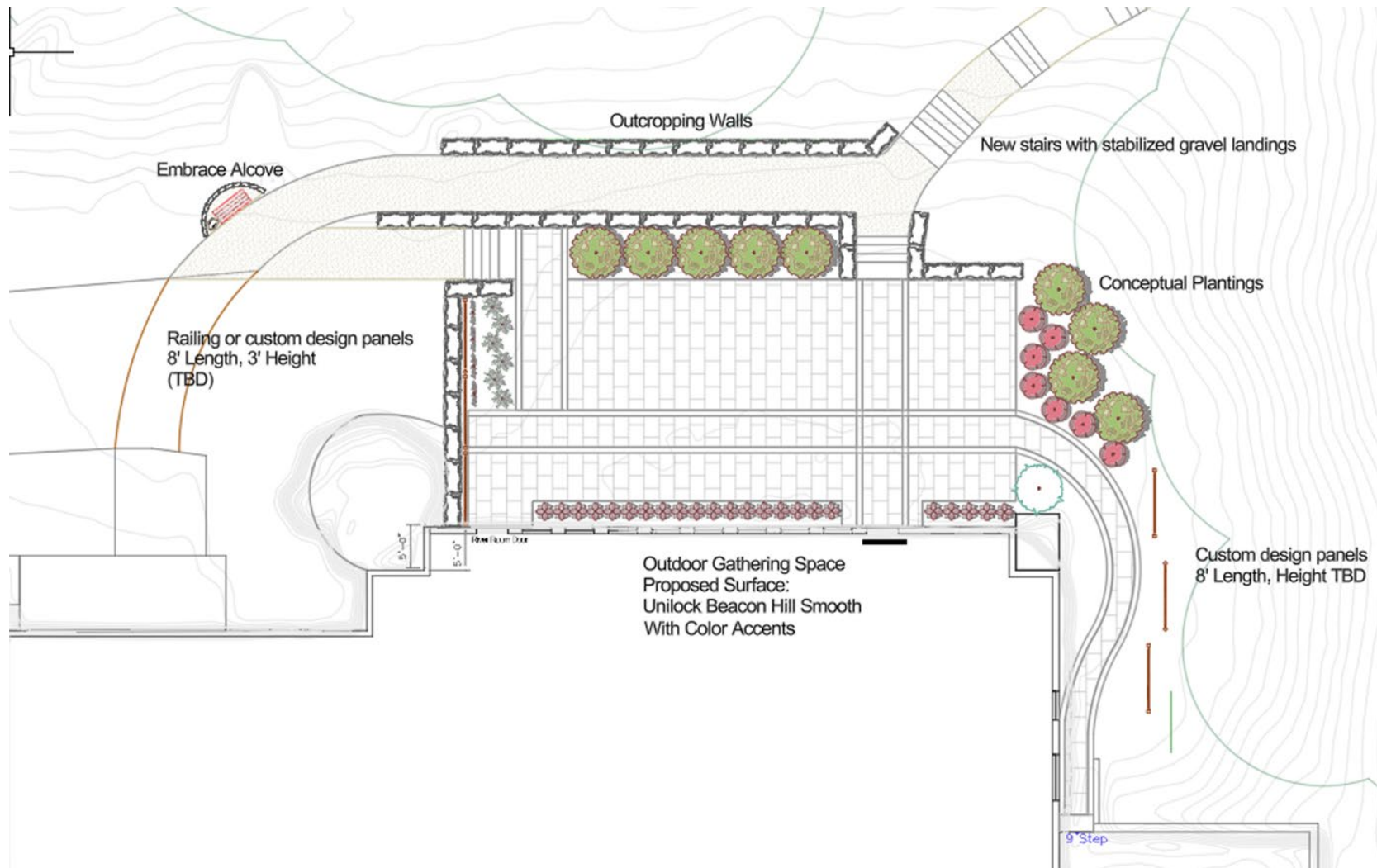


# Grounds – River Room Fellowship Hall Gathering

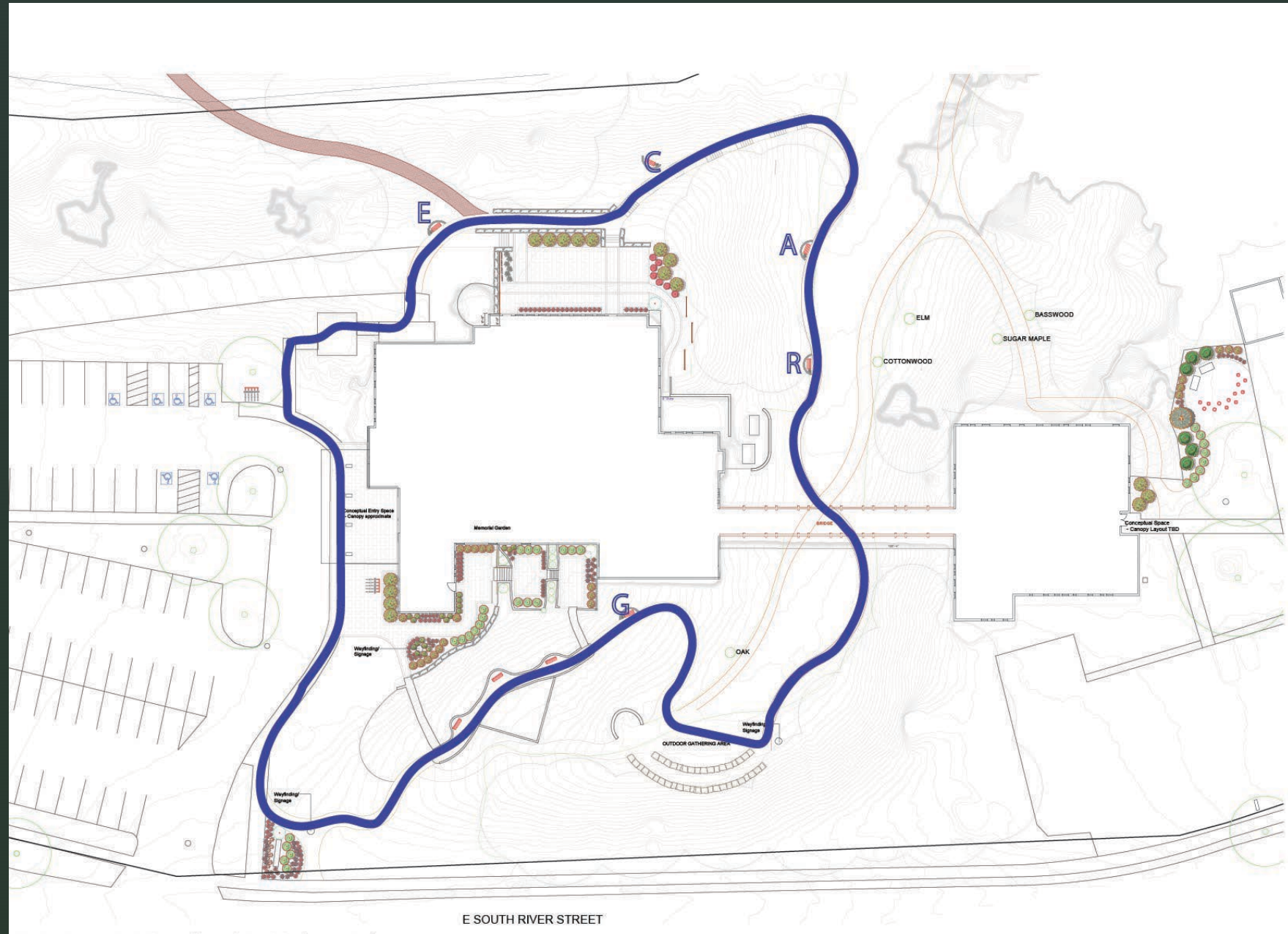




# Grounds – River Room Fellowship Hall Gathering



# GRACE TRAIL





# Grace Trail



Proposing an additional -Welcome/ Wayfinding stone or sign

5 Additional Stops with Leopold Benches & Boulders

Gratitude

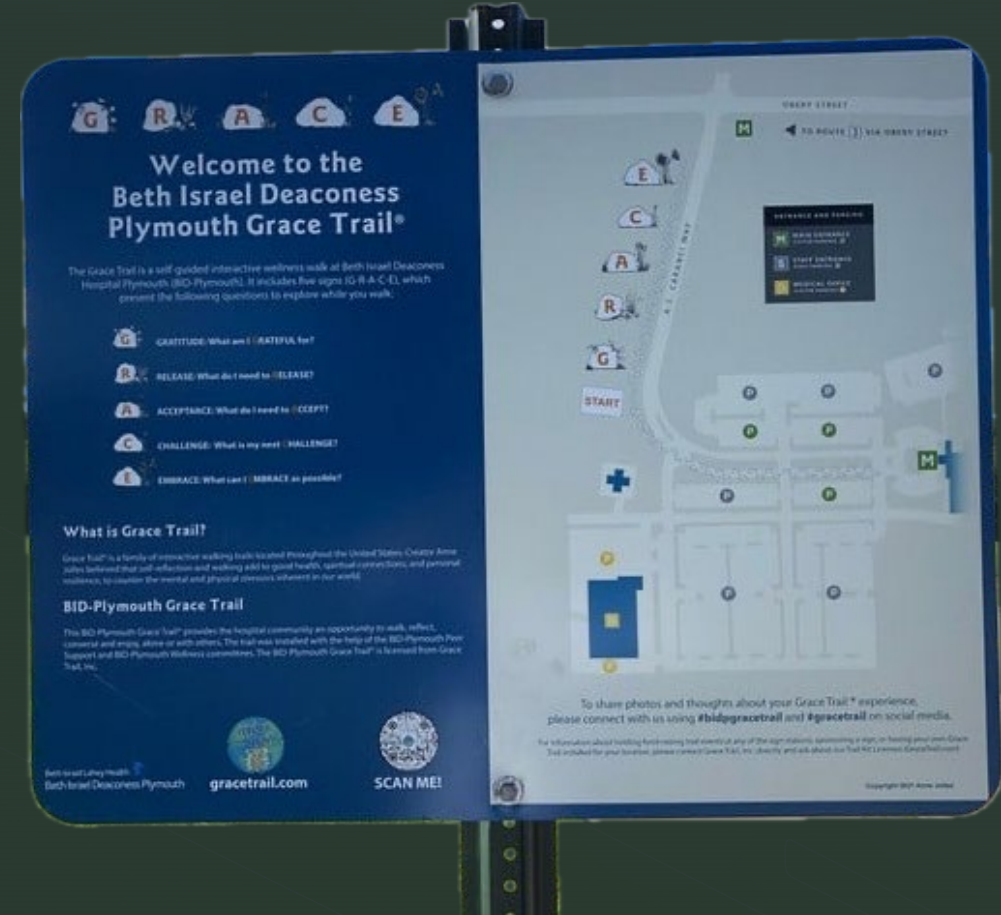
Release

Acceptance

Challenge

Embrace





# Outdoor Classroom / Outdoor Gathering





# Outdoor Classroom / Outdoor Gathering

---

- Location for ease of access to CYF building and storage
- Flexible for large or small groups











Ravine Multipurpose Space (vision for the future)

Questions / Comments?