



First Congregational United Church of Christ



THE KUBALA WASHATKO ARCHITECTS

Meeting #1 - Patterns and Acoustics

A photograph of a church interior, featuring rows of wooden pews and a pulpit. The text "Acoustic Testing Results" is overlaid in a large, teal, serif font. Below it, the name "Daniel Horan - Shiner Acoustics" is written in a smaller, white, sans-serif font. The background shows the wooden structure of the church, including a clock on the wall and a brick wall on the right.

Acoustic Testing Results

Daniel Horan - Shiner Acoustics

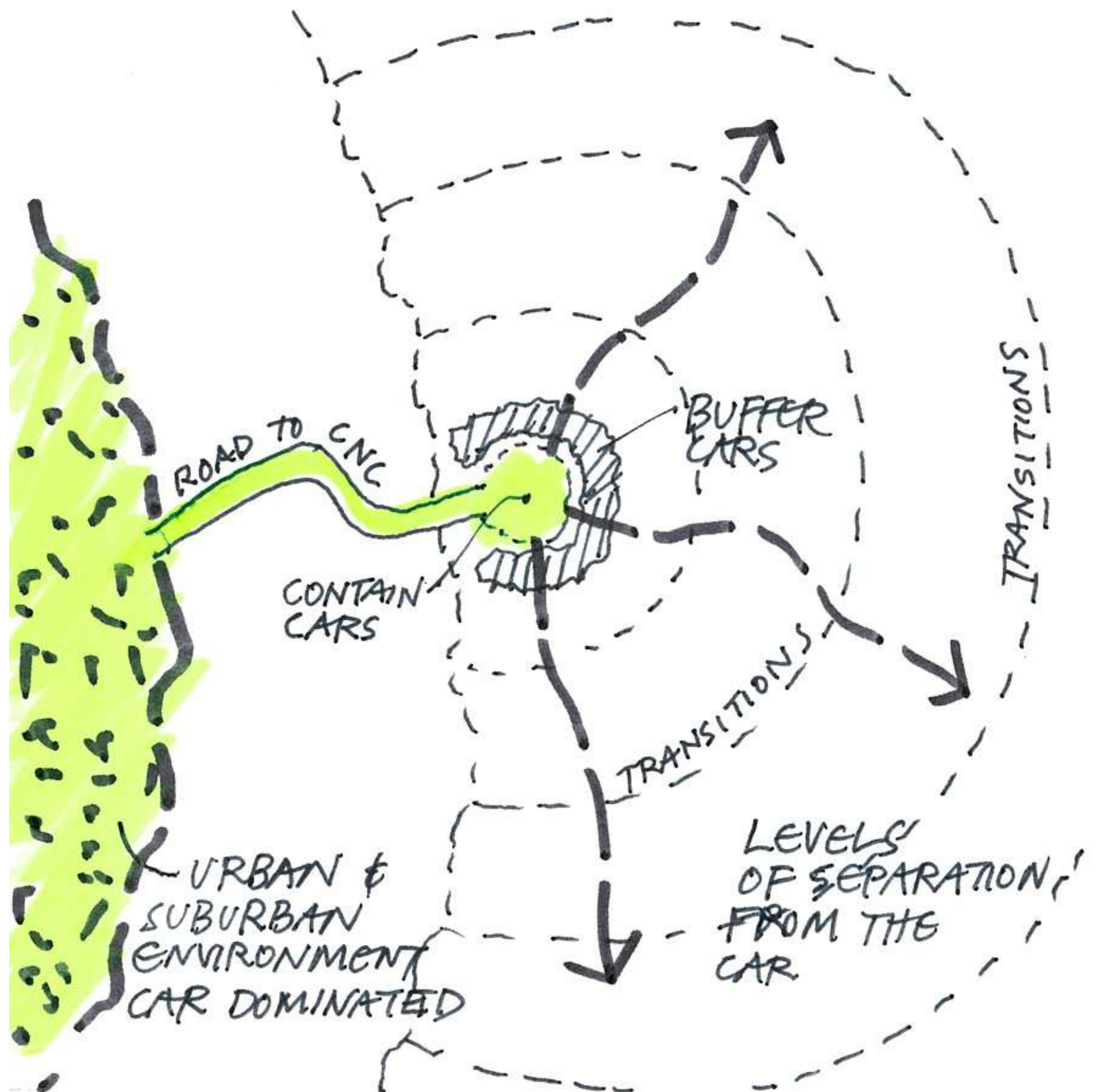


Pattern Writing

A Process of Unfolding Truths

The Goal of Patterns

Gain a deeper understanding of how buildings and site can be configured to support *both human activity and natural processes in a harmonious way*



Finding Patterns

Seek out truth.

Don't design anything until you've observed and listened. Search for important connections, look for evidence of disharmony.

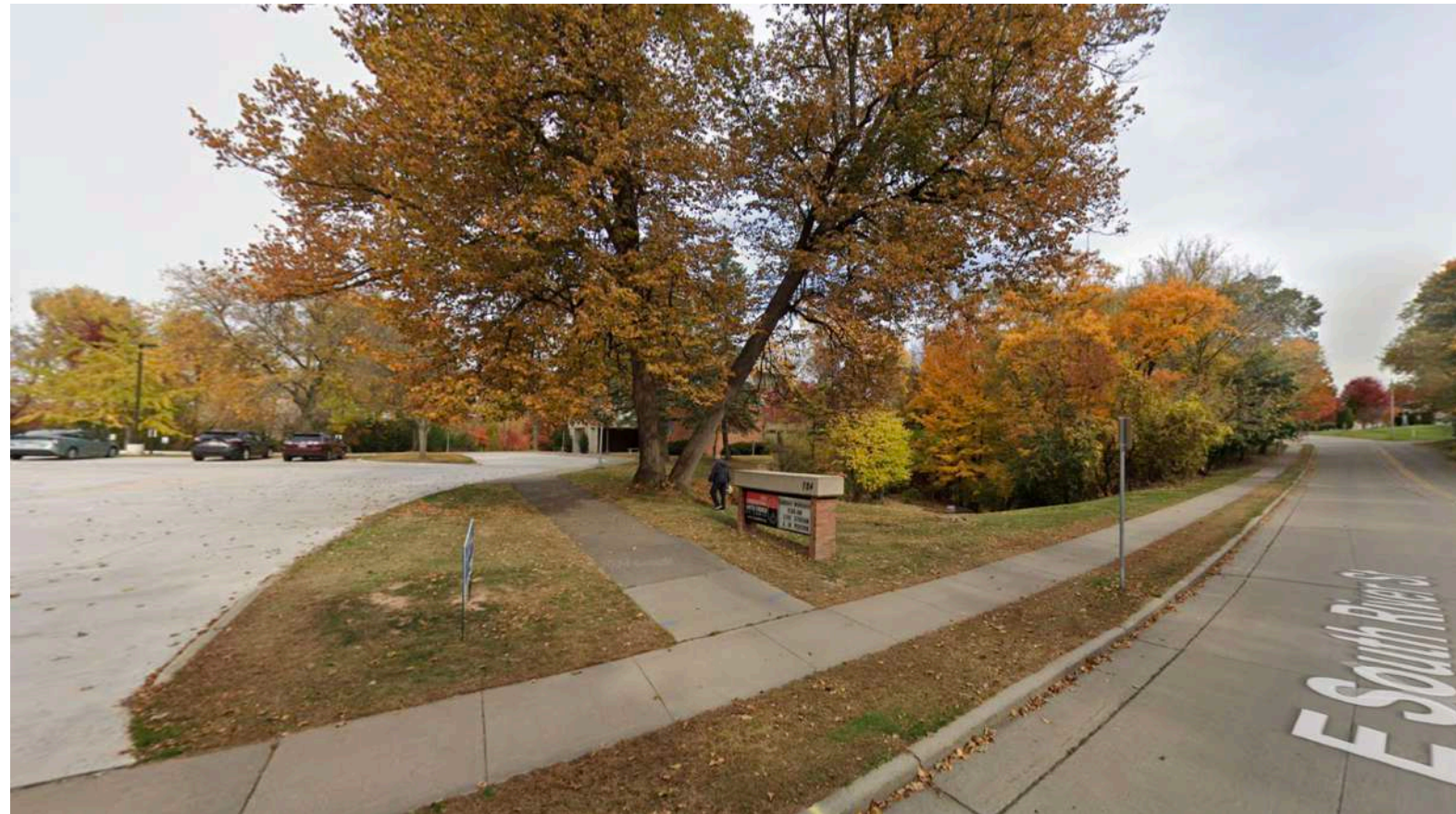
Make it visible.

In a clear and concise way, write out each observed issue and describe the qualities of a solution.

Create a language.

Patterns never stand alone—they are chapters of a greater story. Start with the biggest issues and work your way to the smallest scale.

Welcome to Campus



Issue

A strong fortified masonry building with few windows pulled far away from the road and sidewalk can have the unintended consequence of looking uninviting. The trees are an asset to the Church, but conceal the building from the road.

Solution

Use a variety of design elements that send “welcome” signals to all who get close to the site. The experience starts long before anyone arrives at the front door. Use landscaping that defines the campus zone such as unique plantings and colored paving. Use lines in the landscape that lead the eye from the sidewalks to the entrances. Consider reshaping or extending the covered entry canopy to reach out with an “open arms” gesture. Coordinate these efforts with “Seeing the Life Within” to ensure that light and activity can be seen far down the road.

Accessible to All



Issue

FCUCC structures were built before accessibility needs were deemed important. While improvements have been made in recent years, there are still spaces which are prohibitively challenging for all people to access.

Solution

Every upgrade to the buildings must increase the permanent accessibility to all floor levels and commonly used rooms. Expand the number of accessible restrooms on every floor, especially in new social spaces. Add accessible pathways to significant exterior spaces including the memorial garden.

See the Life Within



Issue

The current rather opaque exterior of the church doesn't adequately communicate the vibrant, progressive spirit within.

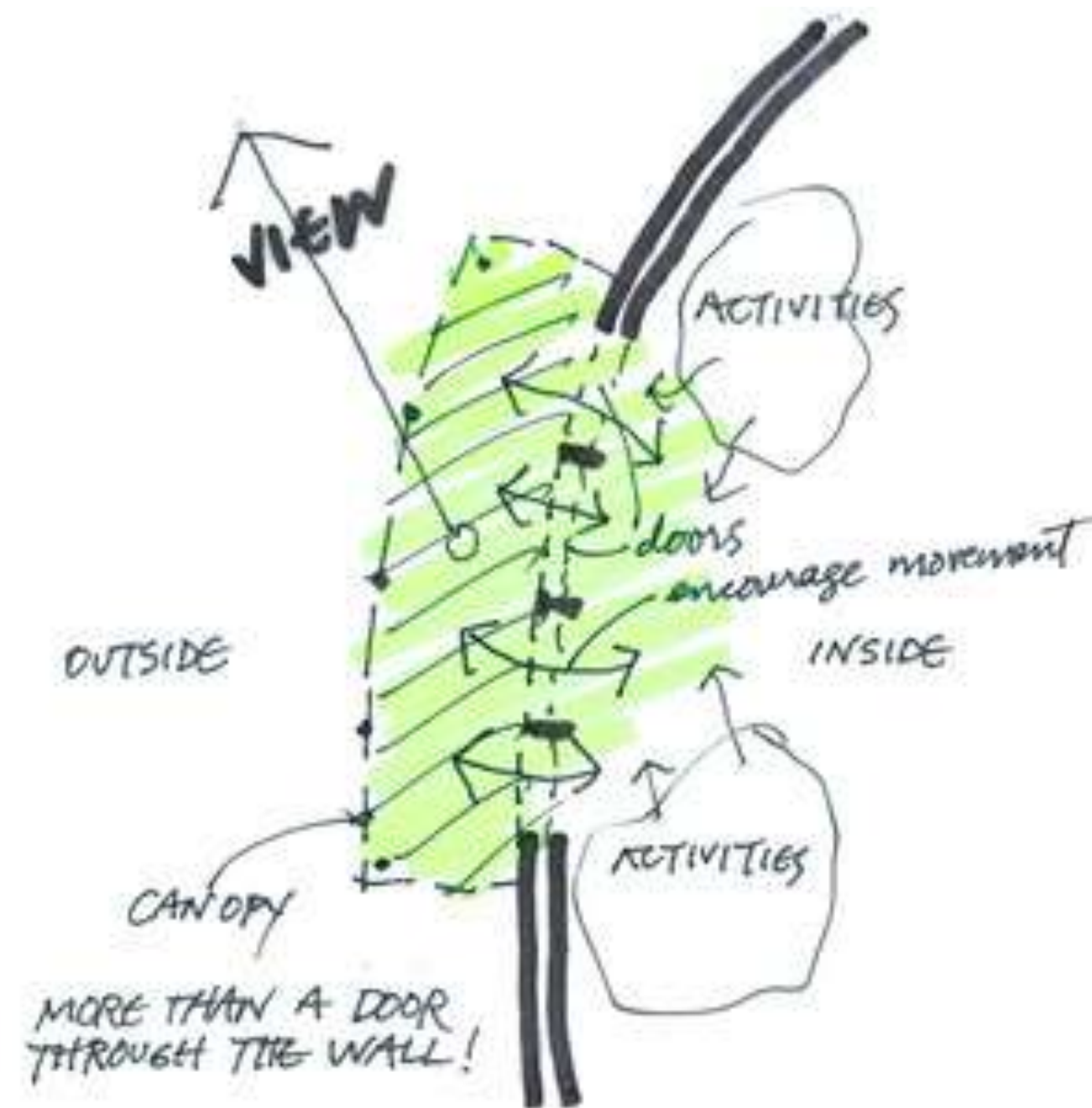
Solution

New windows should be positioned thoughtfully to balance privacy and views. Allow the community to see the vibrancy of the church programs by positioning new windows in gathering spaces and meeting rooms.

See the Life Within



Indoor/Outdoor Connection



Issue

FCUCC is very inwardly oriented with few connections to the outside world. The lush river valley site is a unique asset to the Church that is underutilized.

Solution

Let indoor and outdoor space flow as seamlessly as possible from one to the other. Provide clearly defined entrances and transition zones between important exterior recreational and gathering areas.

Indoor/Outdoor Connection



Carbon Neutral

On a budget



Issue

At a very fundamental level, our success in dealing with climate change will depend on how quickly and profoundly we can change the way we live our lives. FCUCC desires to be a good steward of the land, facility and environment.

Solution

Where ever improvements are made in the church, explore sustainable systems and green technology. Weigh first time costs vs life time costs.

Consider options to generate energy on site (solar) and leverage the earths heat (geo thermal) instead of relying on the grid. Consider low-tech options to reduce the energy demand of the building.

Remote Working



Issue

The church offices are being considered for relocation to allow their current prime location to be used for social space and to consolidate the staff together into a cohesive hub. The only locations with enough space for offices are in the lower level or in the CYF building. These remote locations may result in the sense of isolation and their friendly presence and approachability could be diminished.

Solution

Use direct lines of sight and colors/textures to create attention and invitation wherever the offices land. If the basement location is preferred, try to create an open stair that invites people to flow down to a reception area. If the offices are relocated to the CYF building, compose an inviting and colorful node at the east end of the bridge that can be seen from the main west doors. In either case, a reception desk or security technology will need to be installed at the main doors.

Gathering Hub



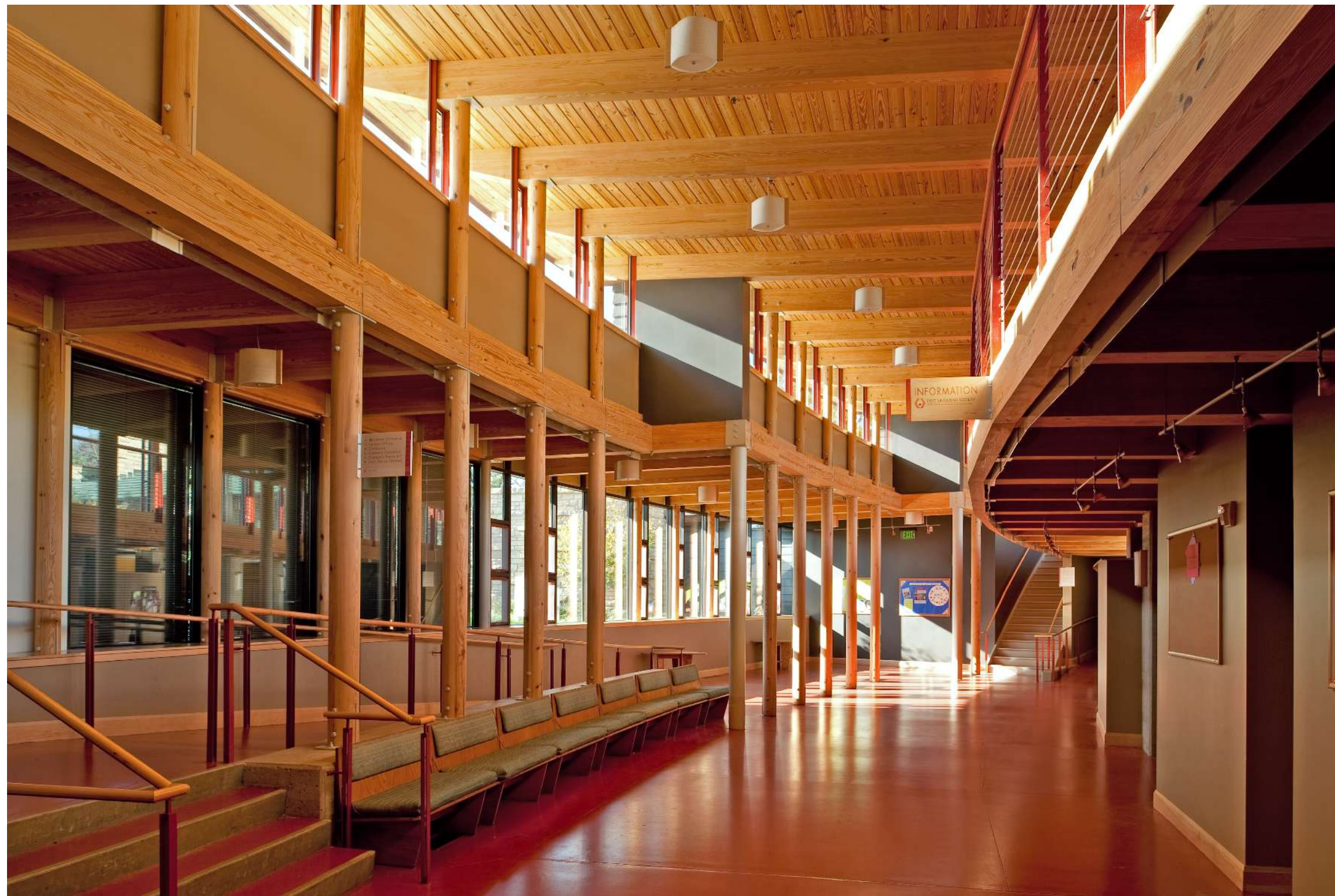
Issue

So much happens in a congregation before and after worship. This is the time when the spirit of inclusion can be made manifest. However, the current Narthex acts more like a crowded hallway than a place to connect hearts. This has the effect of dissuading lingering and talking for meaningful lengths of time. The fellowship hall in the basement was intended to serve as the place for making connections but descending the stairs has a way of deterring some from joining.

Solution

Create a place of gathering that accommodates the many needs of heart to heart connection. It should be placed on the natural path to and from the car and directly outside of the worship space. It must be large enough to hold all who intend to linger and have comfortable seating pockets along its perimeter. Give it abundant glass to emit daylight, views, and strong indoor/outdoor connection. Use durable materials so that it can hold up against foot traffic and food. Be careful with the acoustics to ensure that intimate conversations are intelligible. Give access to storage for tables and provide a play area for the youngest members of the congregation.

Natural Flow



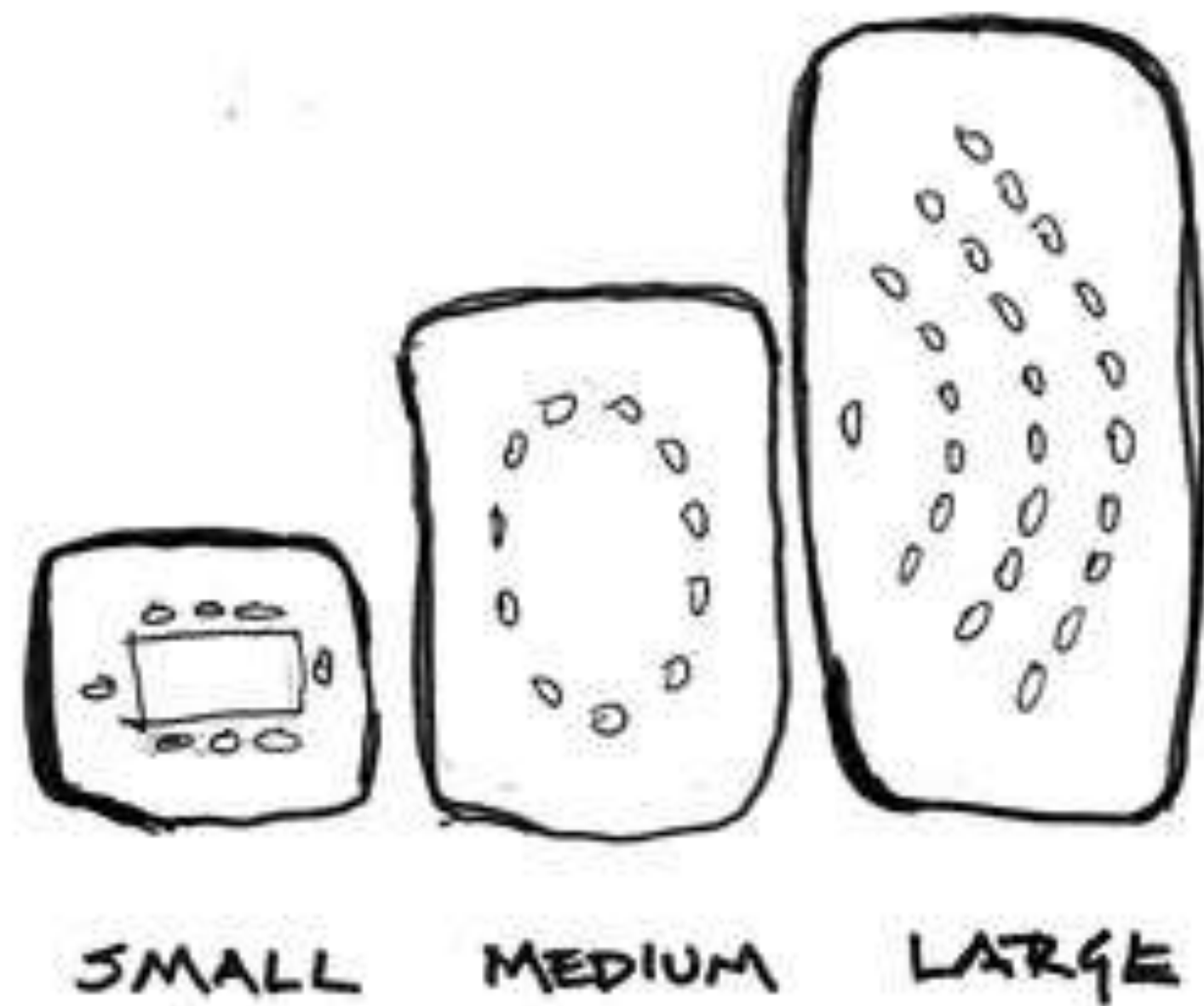
Issue

Hallways have a way of squeezing out opportunities. They can be a mental barrier to socialization.

Solution

Humans will naturally flow from space to space if they are directly adjacent. Wherever the building is remodeled, try to eliminate hallways if possible. Walking along the edge of a large social space is much more inviting than between 2 walls. Simplify the circulation by cutting wide pathways between major social nodes. If hallways are needed, give them room-like qualities and views outside where possible.

Variety of Meeting Spaces



Issue

There are currently mostly “medium” sized meeting rooms, and a homogenous set of meeting rooms does not comfortably support varied uses.

Solution

Incorporate meeting spaces - both formal and informal - at a variety of sizes to support gatherings and events. Locate meeting rooms near other gathering zones so that people don’t feel too remote from the “hub” of activity. Reshape the fellowship hall as the largest scale meeting room and rename it to “Event Hall”

Consider the opportunity to rent spaces out to the community.

Nursery Nearby



Issue

Spaces for children are located in the CYF building which is separated from the primary building by a bridge. This sense of remoteness can cause unease in parents.

Solution

Parents of young children will be more at ease if their children are not located in a remote location. Place the nursery within a short walk, and preferably within eyeshot of the worship space. This gives a parent the mental map that their child is nearby and safe.

Food Follows Function



Issue

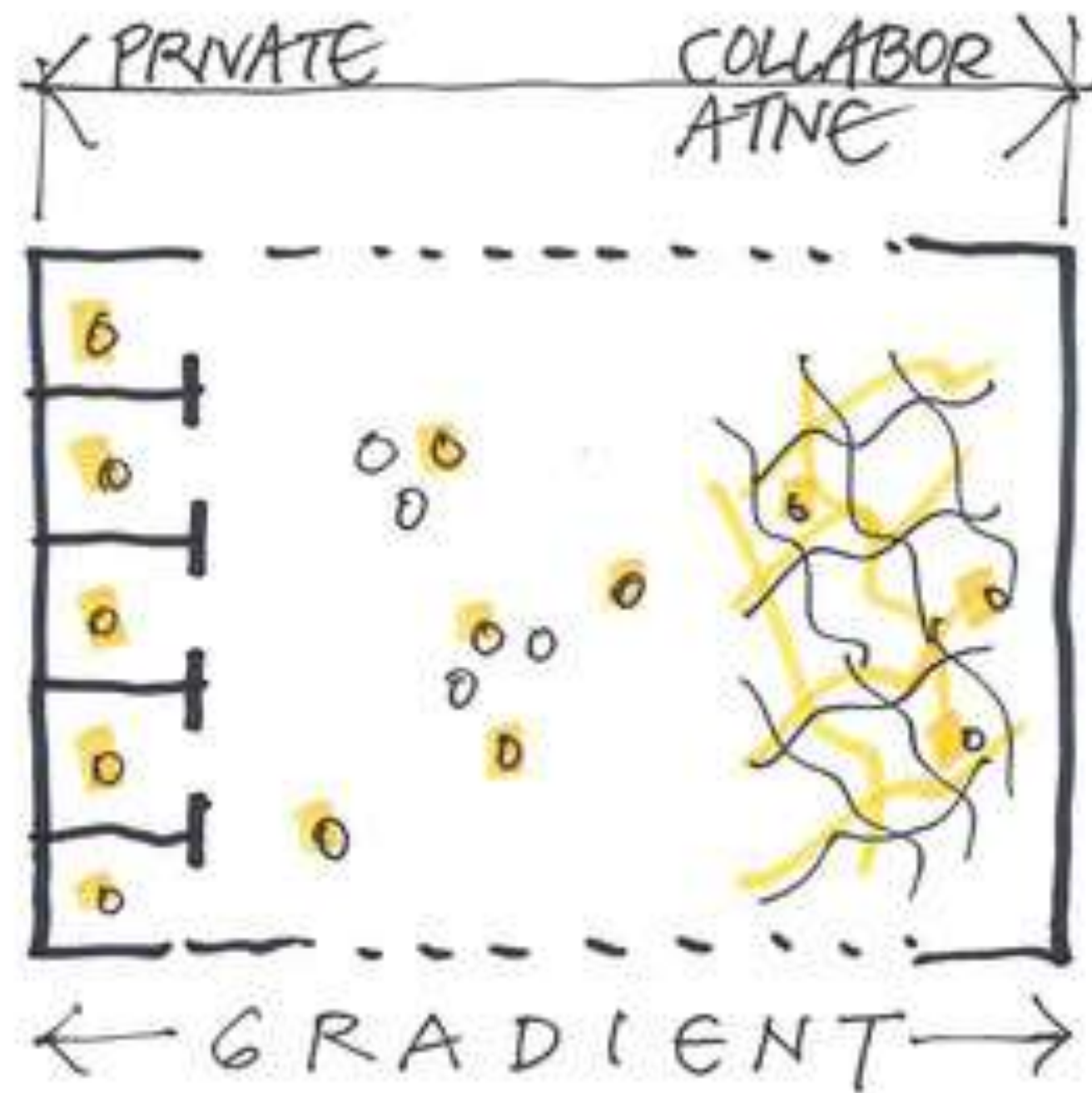
The kitchen is in the basement and is not being fully utilized. Food is central to gathering and sociability and this opportunity is being diminished due to location.

Solution

Consider including a kitchenette space within the Gathering Hub. This may be as simple as a food station with counters, or a larger kitchen zone for larger events.

Maintain the basement catering kitchen as a full service cooking space for larger events and rental opportunities.

Office Zone



Issue

Offices are located throughout the building (both in the main building and in the CYF building, and on both floors). Offices that are not grouped with the others may feel isolated.

Solution

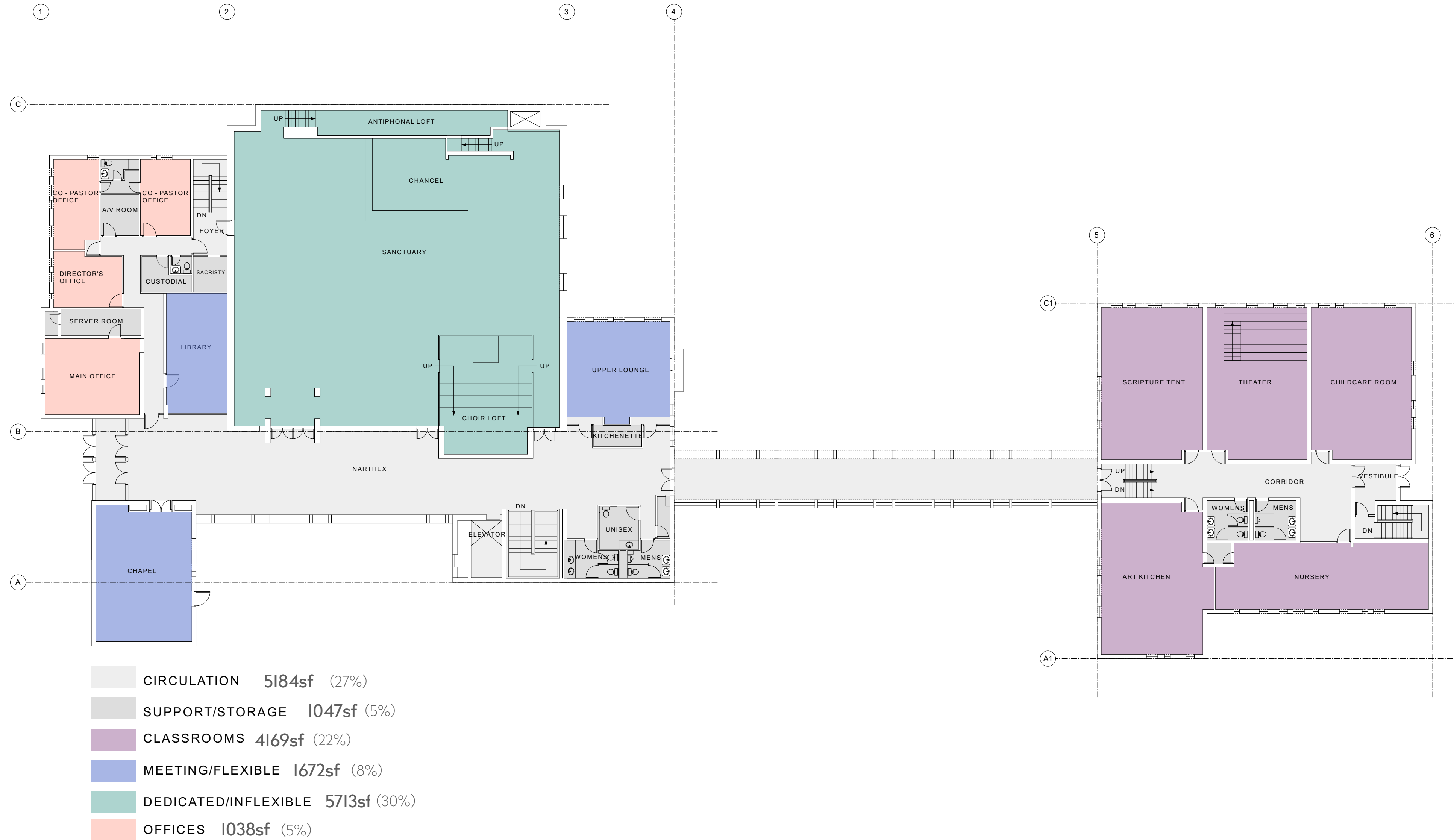
When evaluating the options for "Remote Working", prioritize options which allow all offices to be grouped together in a new Office Zone. Provide an open, collaborative working area which creates a friendly presence, but balance it with the privacy required for sensitive documents and conversations.

Missing Patterns?





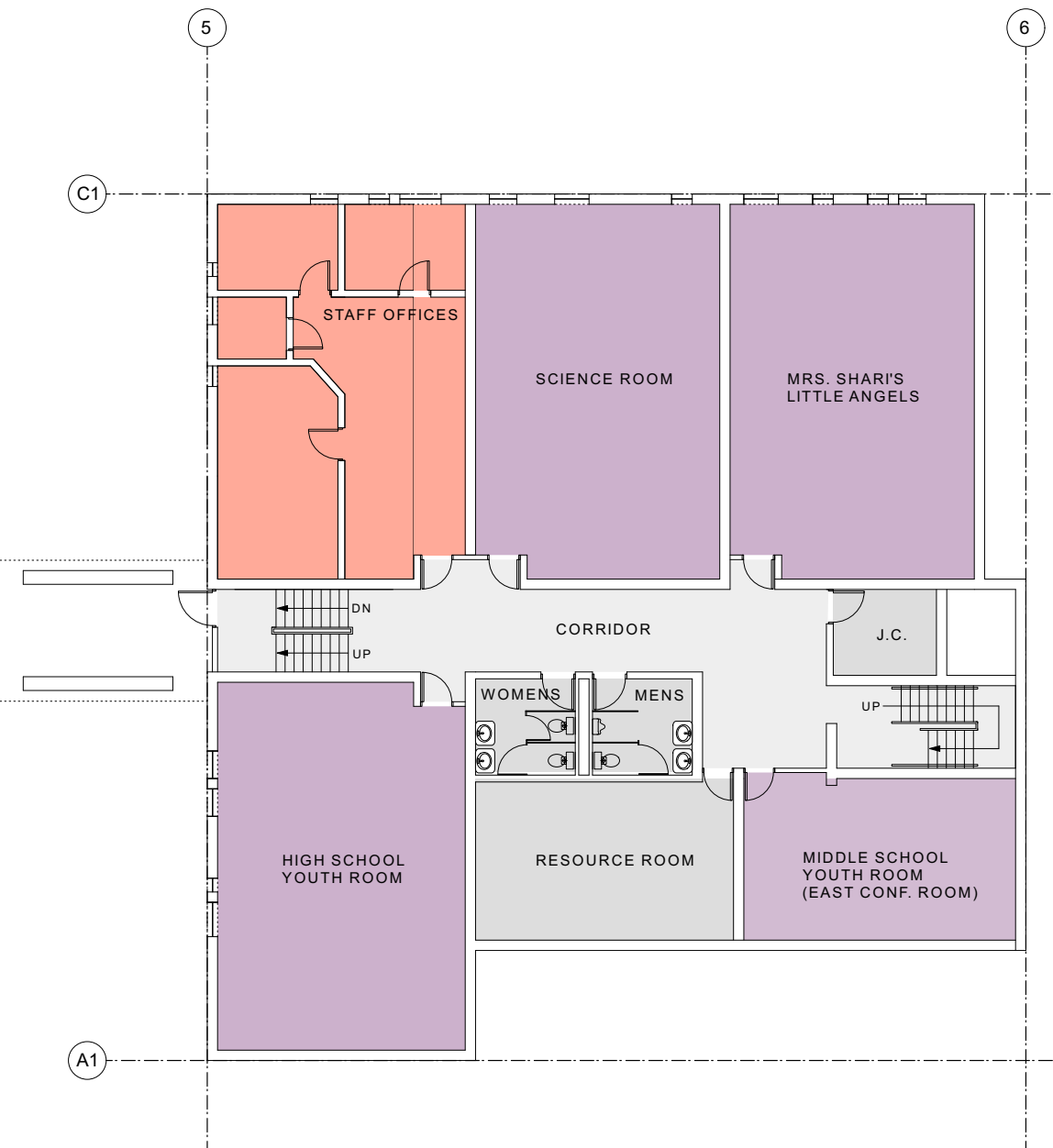
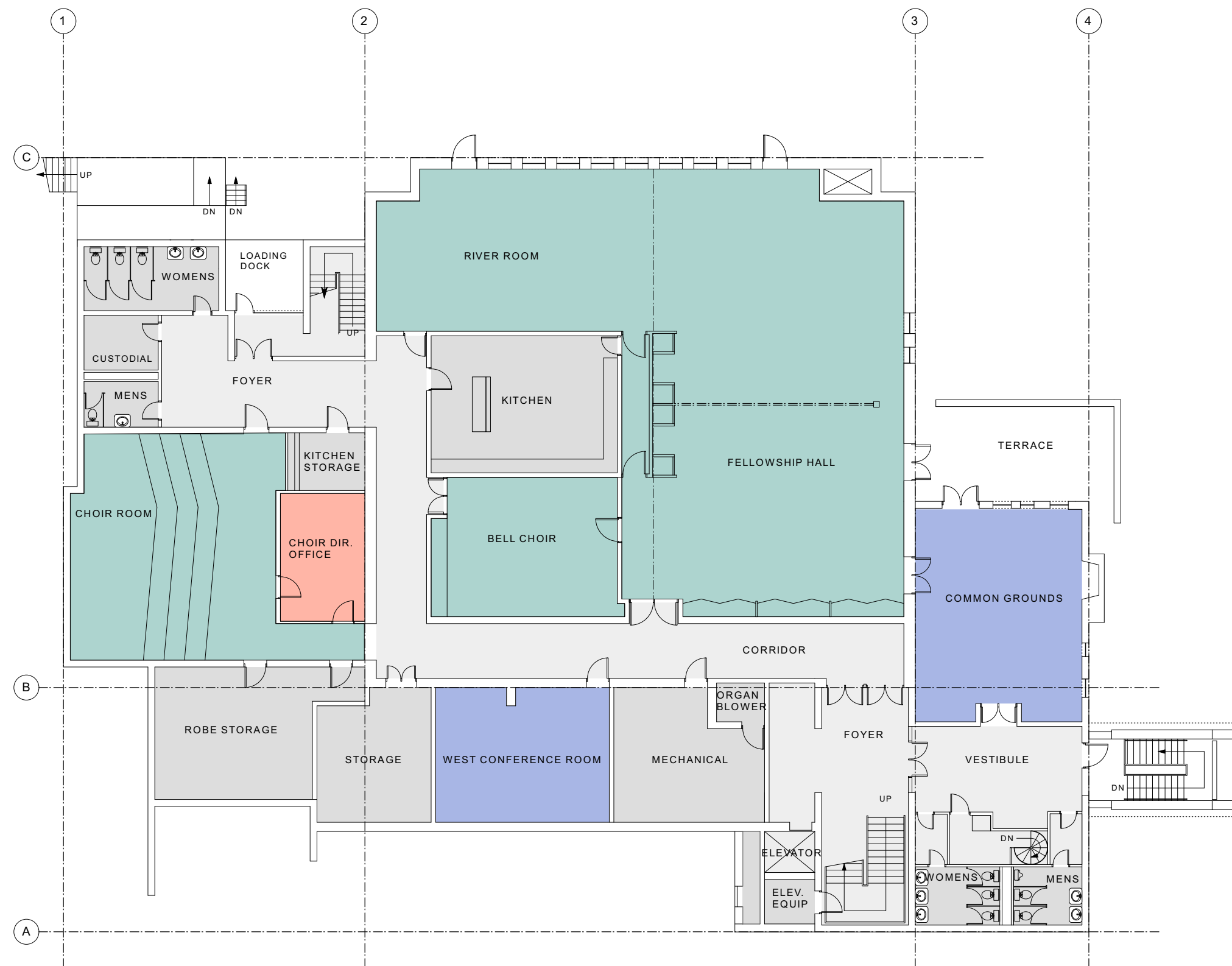
Existing Floor Plans



First Floor Plan - First Congregational United Church of Christ

1
A1.0
SCALE: 3/32" = 1'-0"

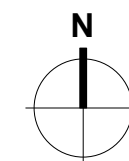


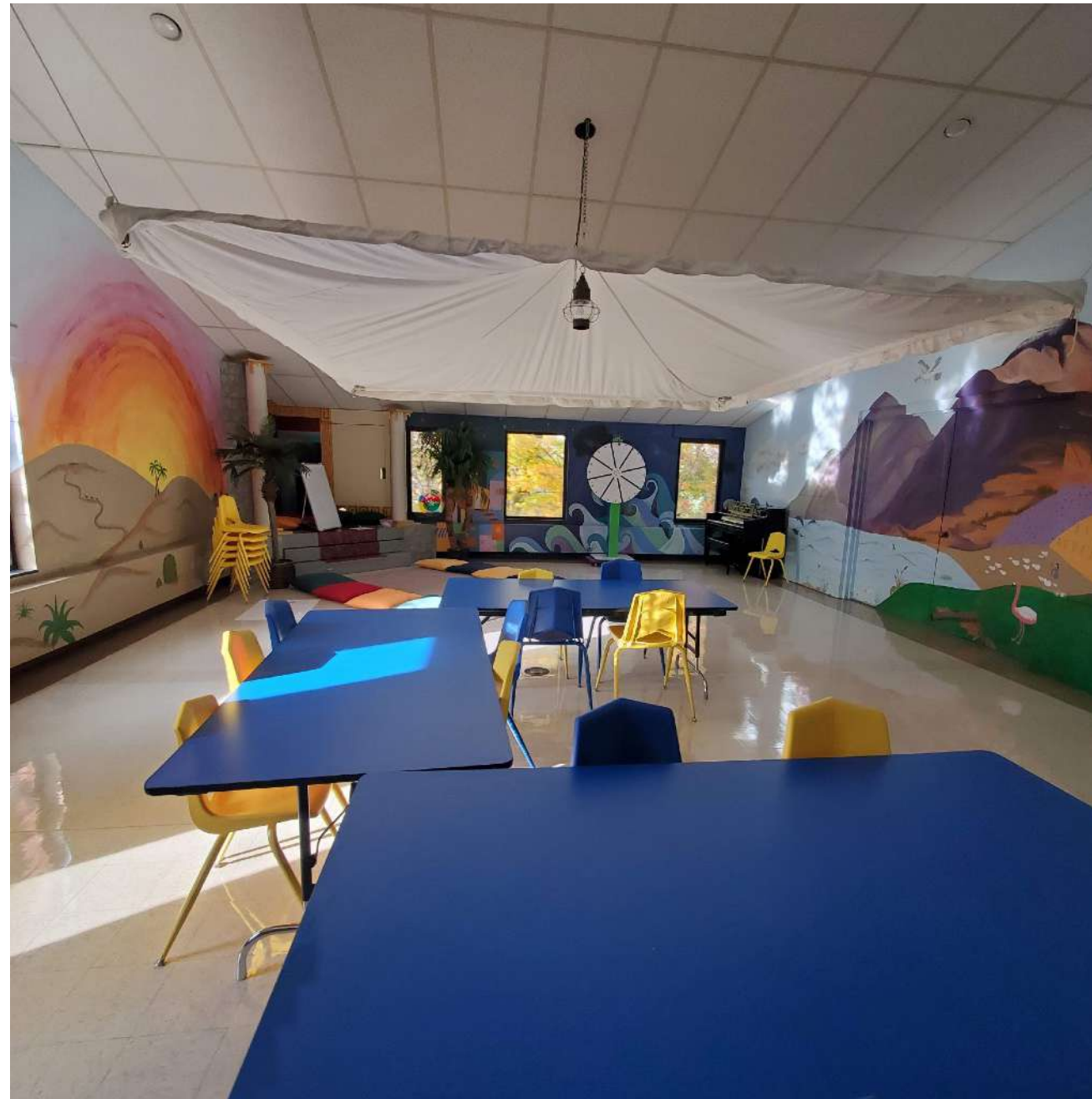


- CIRCULATION **3435sf** (21%)
- SUPPORT/STORAGE **3109sf** (20%)
- CLASSROOMS **2958sf** (17%)
- MEETING/FLEXIBLE **1238sf** (7%)
- DEDICATED/INFLEXIBLE **5023sf** (29%)
- OFFICES **1008sf** (6%)

1
A1.0
SCALE: 3/32" = 1'-0"

Lower Level Plan - First Congregational United Church of Christ





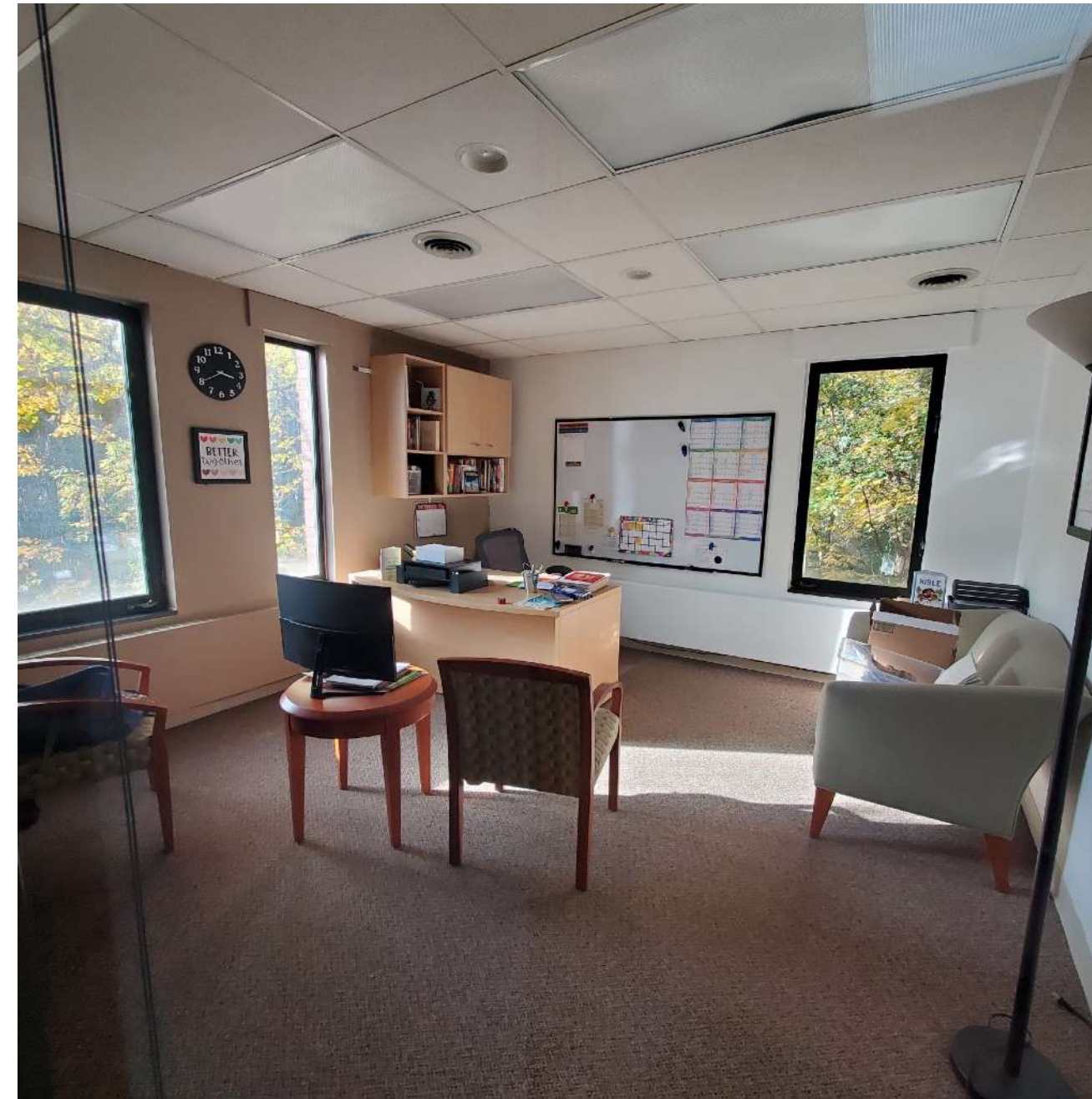
Classrooms - 9

Goals:

Sundays - 5 rooms (1 nursery, 1 preschool, 3 rotation rooms)

Weds - 3 rooms (1 child care, 1 middle school and 1 high school)

Could middle school rooms overlap with meeting spaces?



Offices - 8

How many offices are needed?

How many require private rooms vs could be open/flexible?

Which offices should be grouped together vs independent?



Meeting Spaces - 5

Do any of the CYF rooms get used for meetings?

What is the size range of groups which use these rooms?

Would it be appropriate for some meeting spaces to be more open/not enclosed by walls?



Thank You!

THE KUBALA WASHATKO ARCHITECTS